

Ground Floor

Key

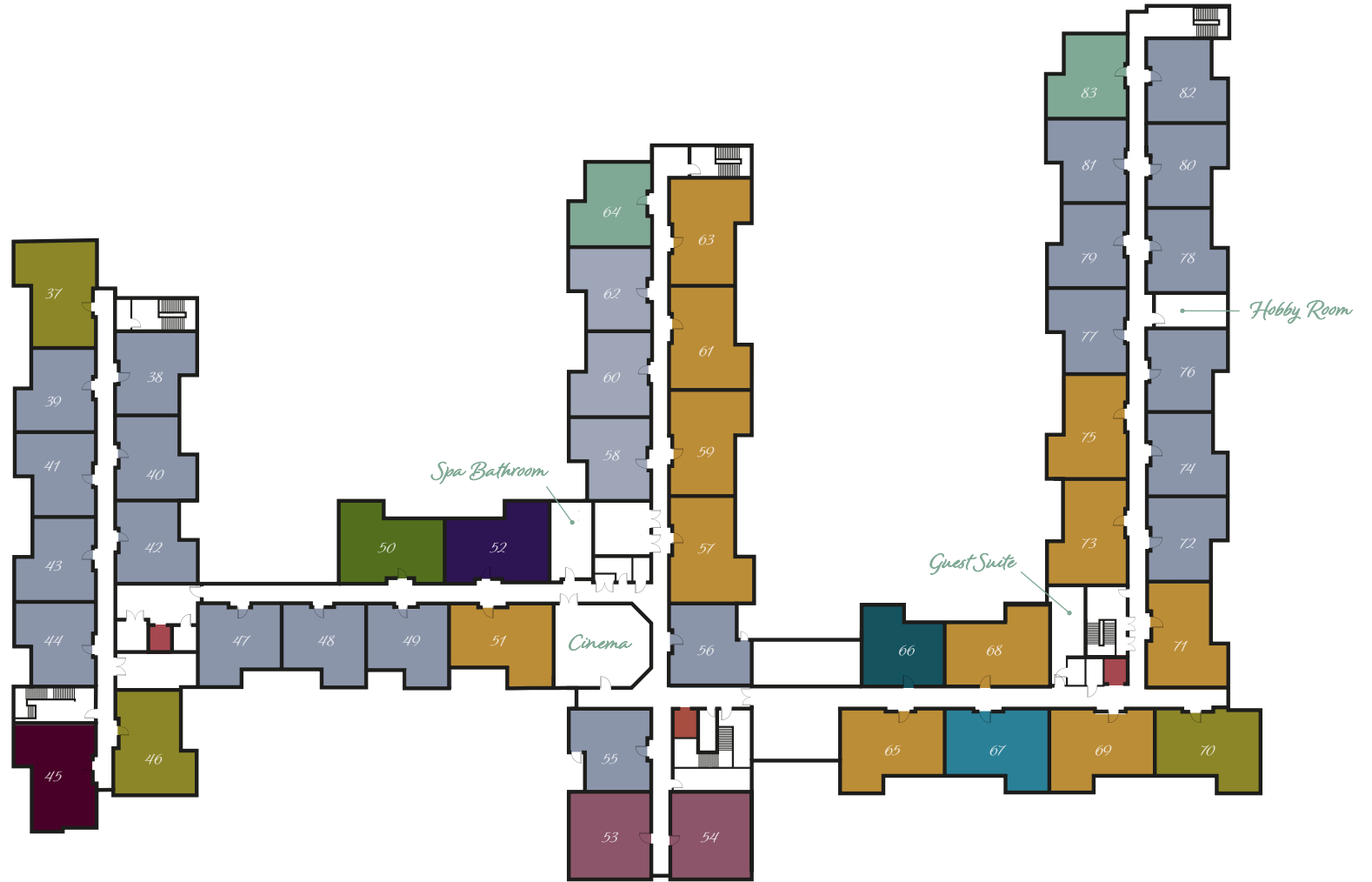
- Parsley
- Thyme
- Sage
- Rosemary
- Basil
- Mint
- Oregano
- Marjoram
- Dill
- Tarragon
- Lifts



First Floor

Key

- Parsley
- Thyme
- Sage
- Rosemary
- Basil
- Mint
- Oregano
- Marjoram
- Dill
- Tarragon
- Lifts

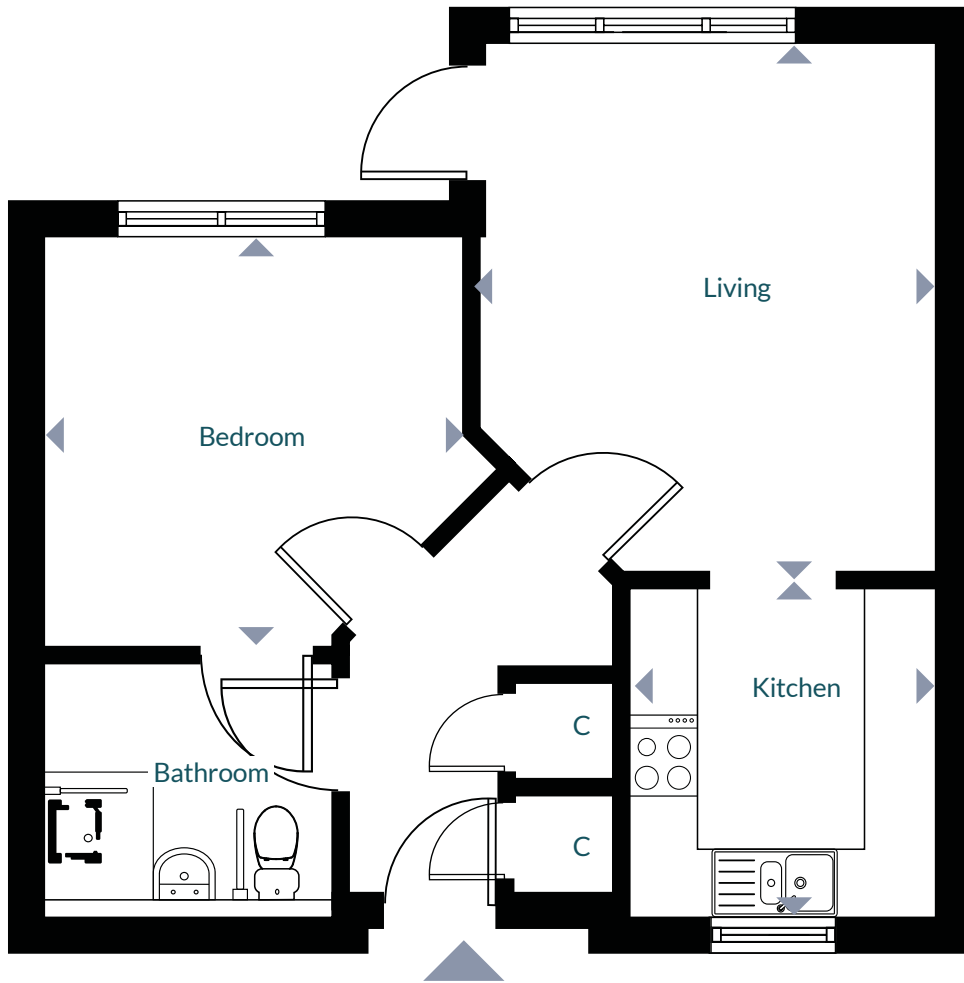


Second Floor



Parsley

Rented - Plots 2-8, 11-13, 17, 19, 21, 25, 27, 29-35, 38-44,
47-49, 55, 56, 58, 60, 62, 72, 74, 76-82 & 85-91



C = Cupboard

Apartment Size: 539 - 547²



Please note, floor plans and dimensions are taken from architectural drawings and are for guidance only.
All dimensions indicated are approximate and are within a tolerance of plus or minus 50mm.
Computer generated images are indicative only.

Thyme

Rented - Plots 53 & 54



C = Cupboard

Apartment Size: 542 - 544ft²



Please note, floor plans and dimensions are taken from architectural drawings and are for guidance only.
All dimensions indicated are approximate and are within a tolerance of plus or minus 50mm.
Computer generated images are indicative only.

Sage

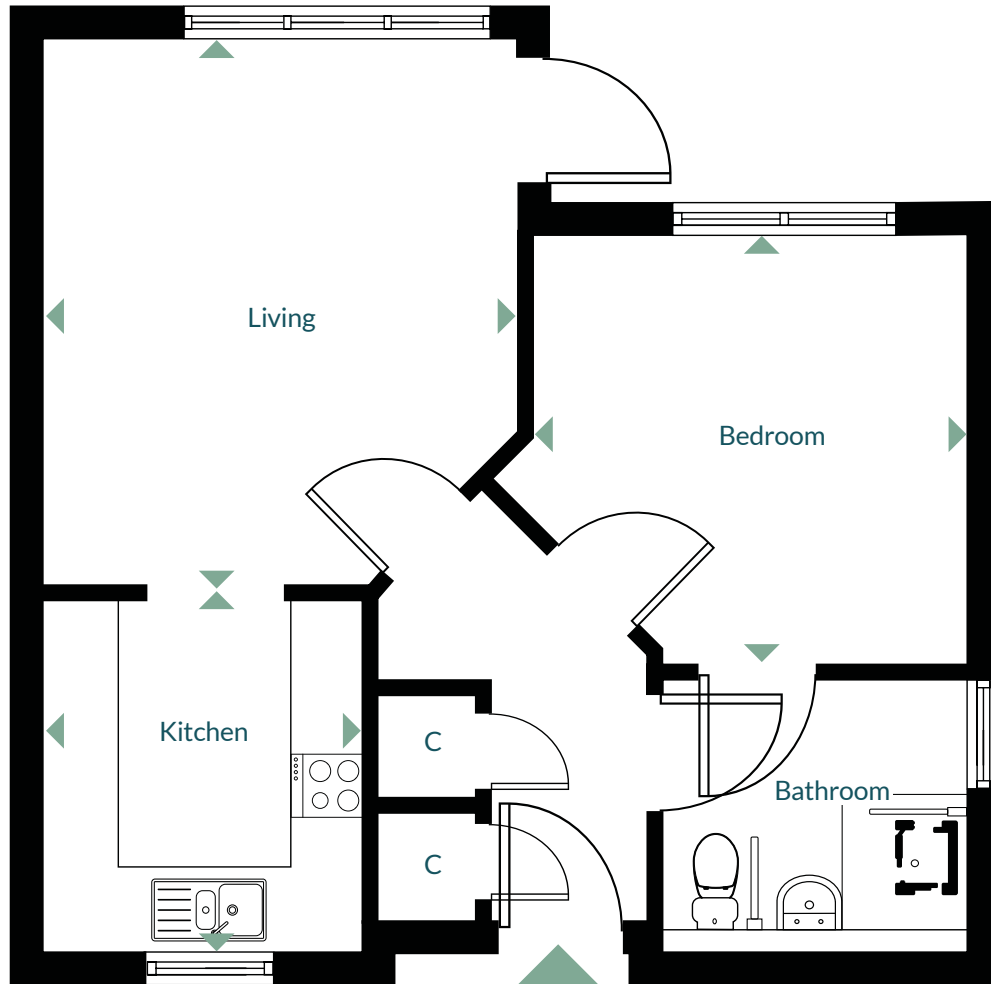
Rented - Plots 23, 36, 64 & 83



1



Floor G & 1



C = Cupboard

Apartment Size: 539ft²



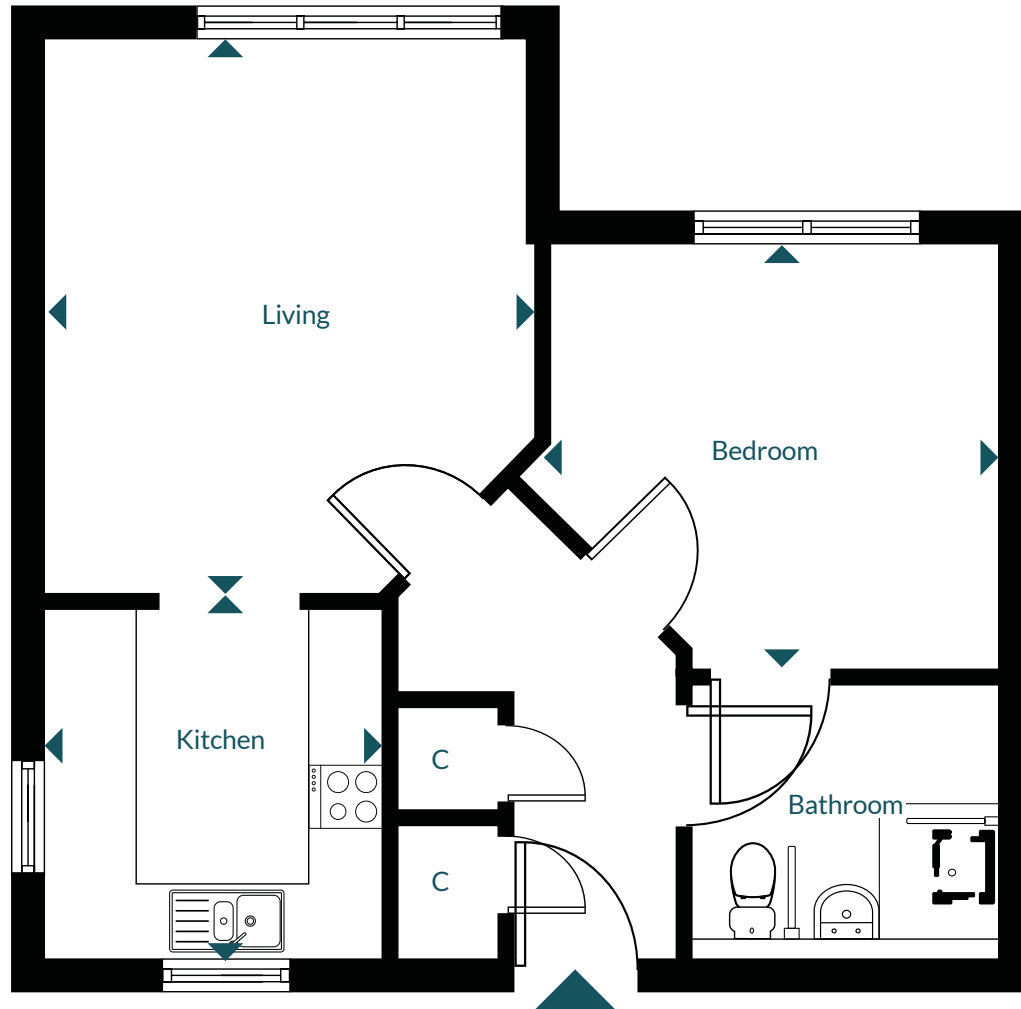
Please note, floor plans and dimensions are taken from architectural drawings and are for guidance only.

All dimensions indicated are approximate and are within a tolerance of plus or minus 50mm.

Computer generated images are indicative only.

Rosemary

Rented - Plot 66



C = Cupboard

Apartment Size: 546ft²

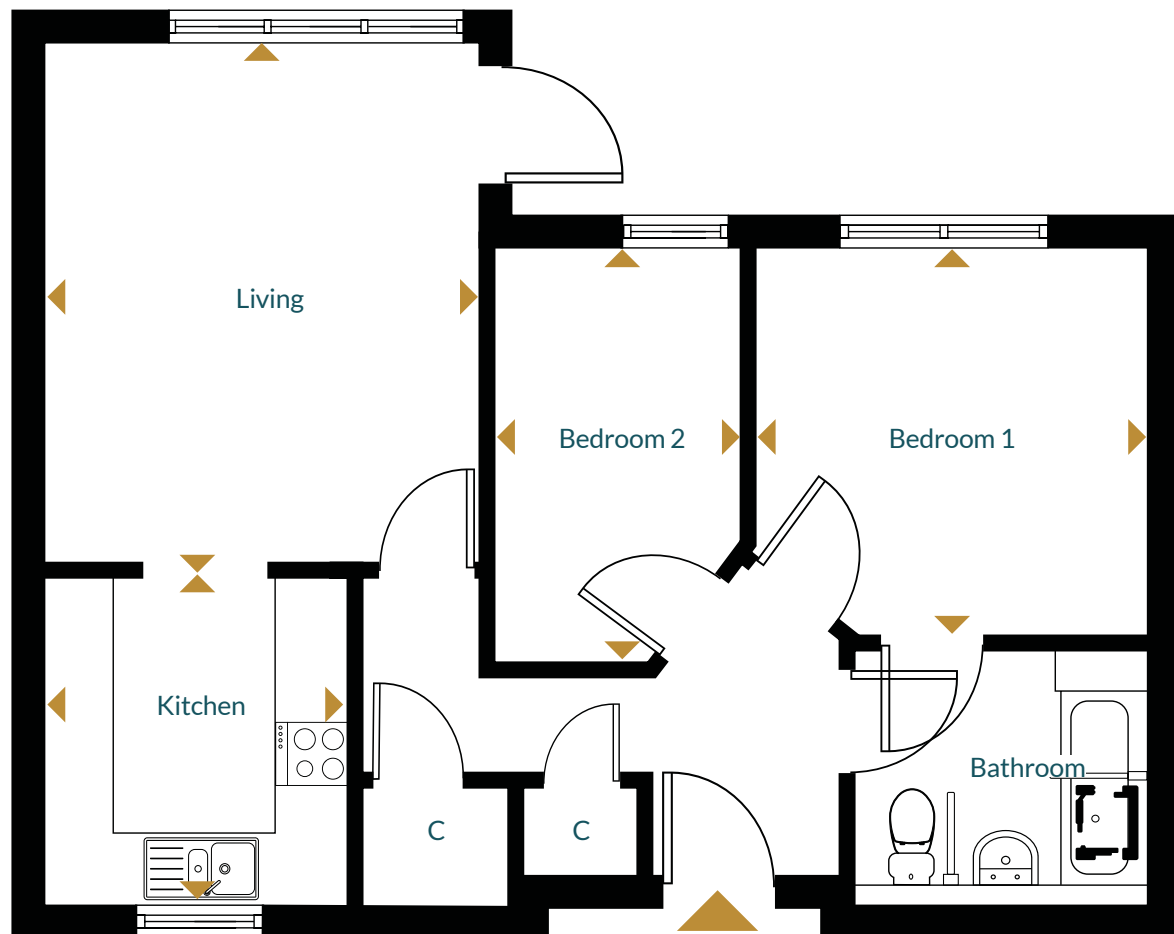


Please note, floor plans and dimensions are taken from architectural drawings and are for guidance only.
All dimensions indicated are approximate and are within a tolerance of plus or minus 50mm.
Computer generated images are indicative only.

Basil

Rented - Plots 24 & 71
Shared Ownership - Plots 16, 18, 20, 22, 26, 28, 51, 57, 59,
61, 63, 65, 68, 69, 73 & 75

 2  Floor G, 1 & 2



C = Cupboard

Apartment Size: 663 - 667ft²
Type E1 - 672ft²

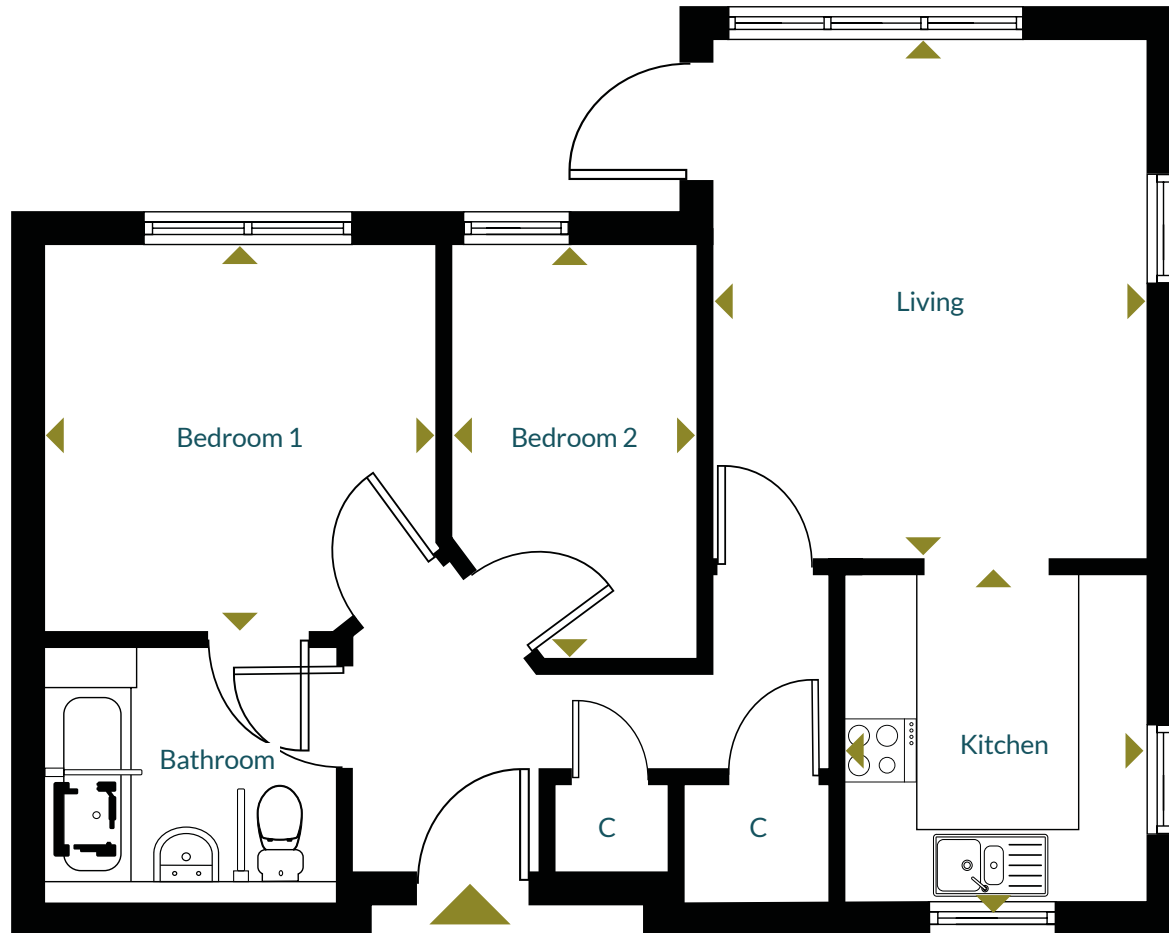


Please note, floor plans and dimensions are taken from architectural drawings and are for guidance only.
All dimensions indicated are approximate and are within a tolerance of plus or minus 50mm.
Computer generated images are indicative only.

Mint

Rented - Plots 1, 37 & 84
Shared Ownership - Plots 10, 46, 70 & 93

2  Floor G, 1 & 2



C = Cupboard

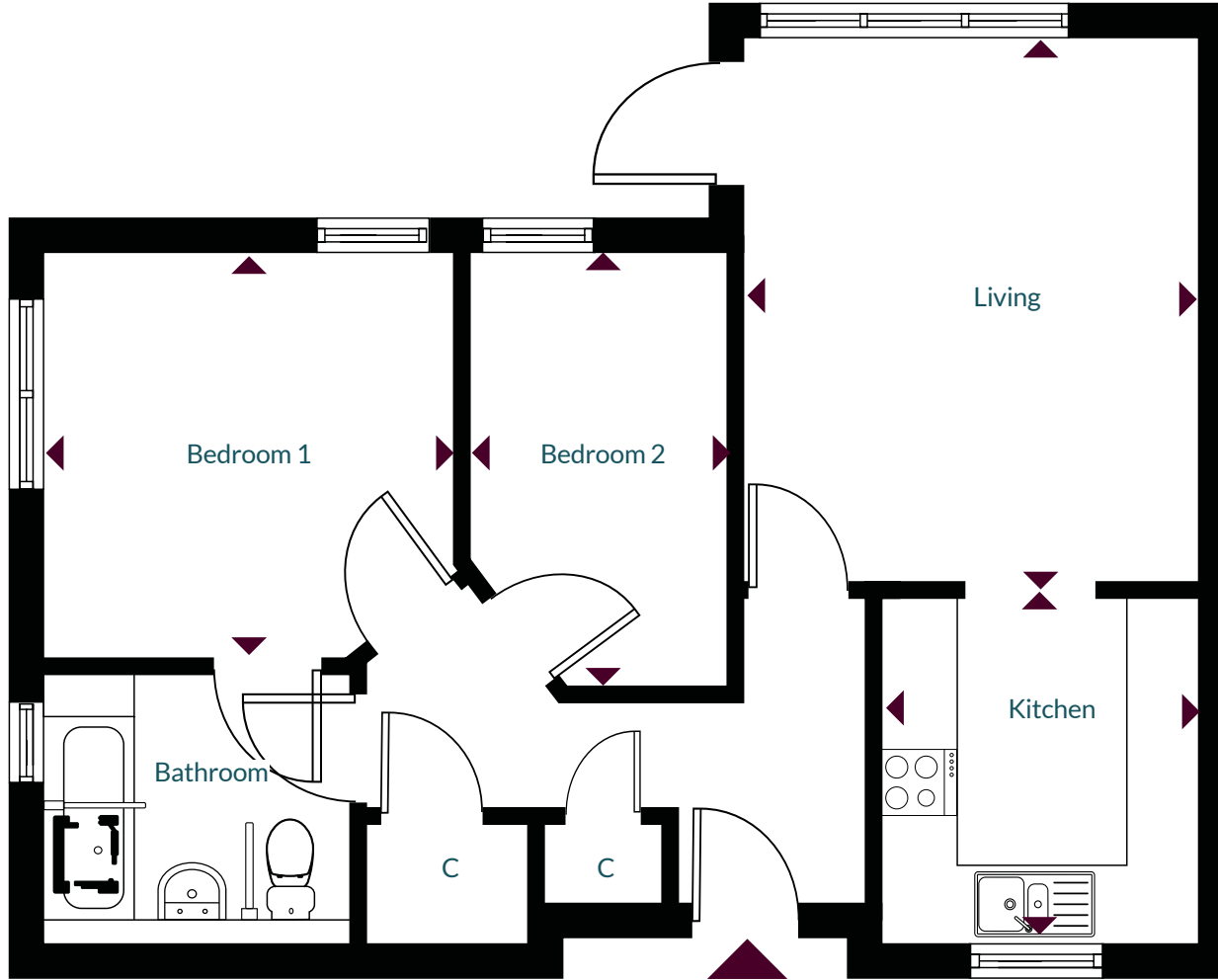
Apartment Size: 665ft²



Please note, floor plans and dimensions are taken from architectural drawings and are for guidance only.
All dimensions indicated are approximate and are within a tolerance of plus or minus 50mm.
Computer generated images are indicative only.

Oregano

Rented - Plot 92
Shared Ownership - Plots 9 & 45



C = Cupboard

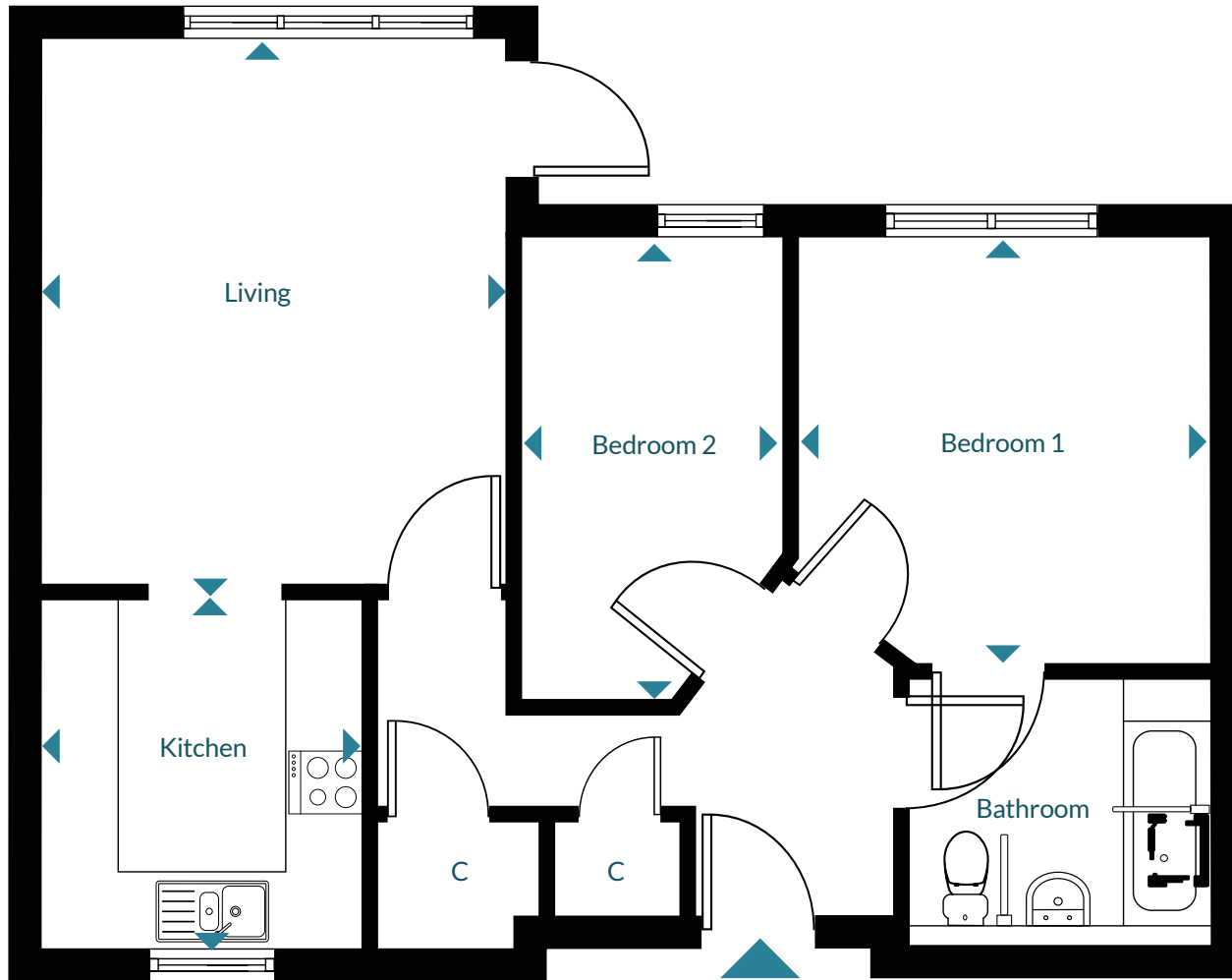
Apartment Size: 669ft²



Please note, floor plans and dimensions are taken from architectural drawings and are for guidance only. All dimensions indicated are approximate and are within a tolerance of plus or minus 50mm. Computer generated images are indicative only.

Marjoram

Shared Ownership - Plot 67



C = Cupboard

Apartment Size: 666ft²

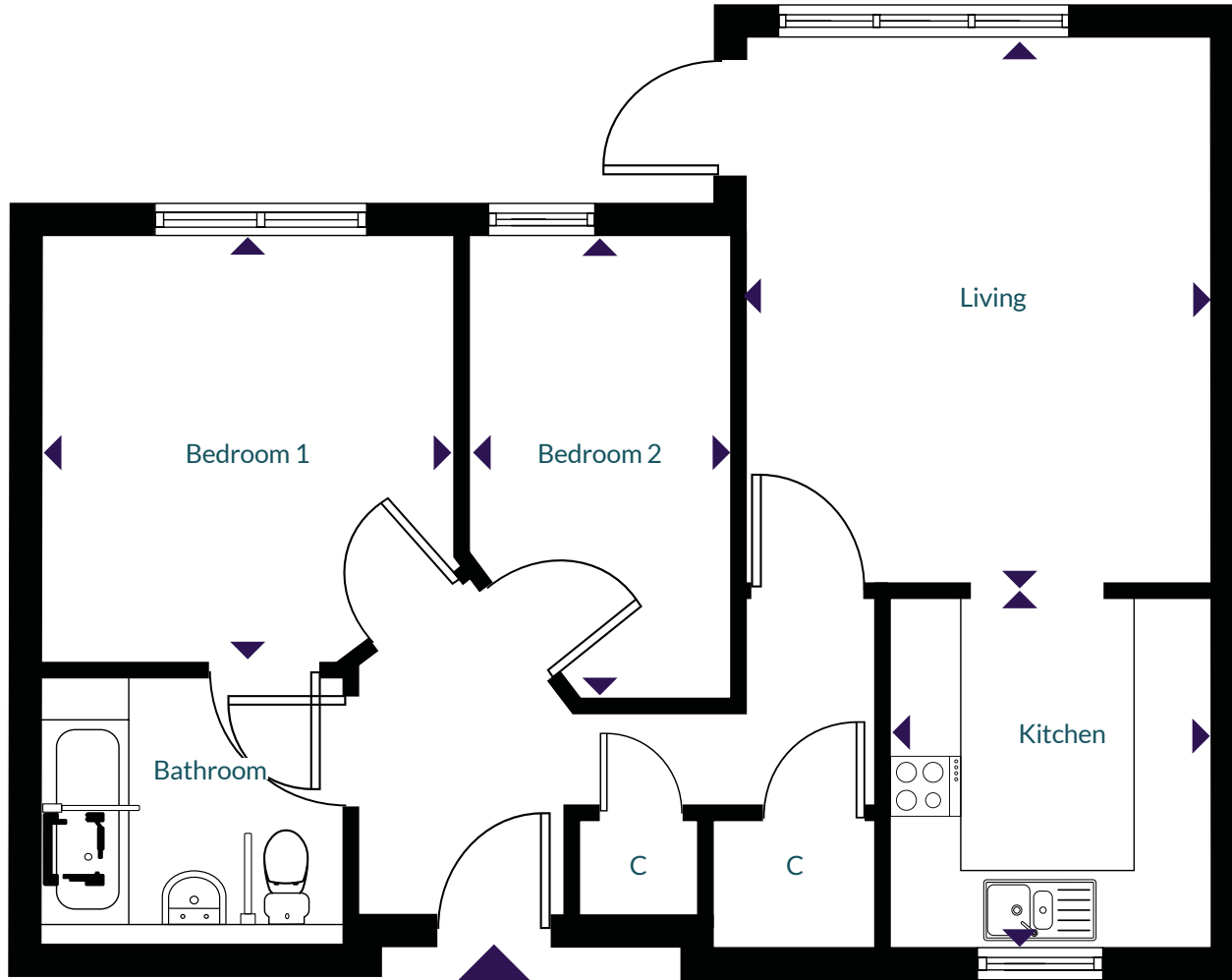


Please note, floor plans and dimensions are taken from architectural drawings and are for guidance only. All dimensions indicated are approximate and are within a tolerance of plus or minus 50mm. Computer generated images are indicative only.

Dill

Rented - Plots 15 & 52

2  Floor G & 1



C = Cupboard

Apartment Size: 668ft²

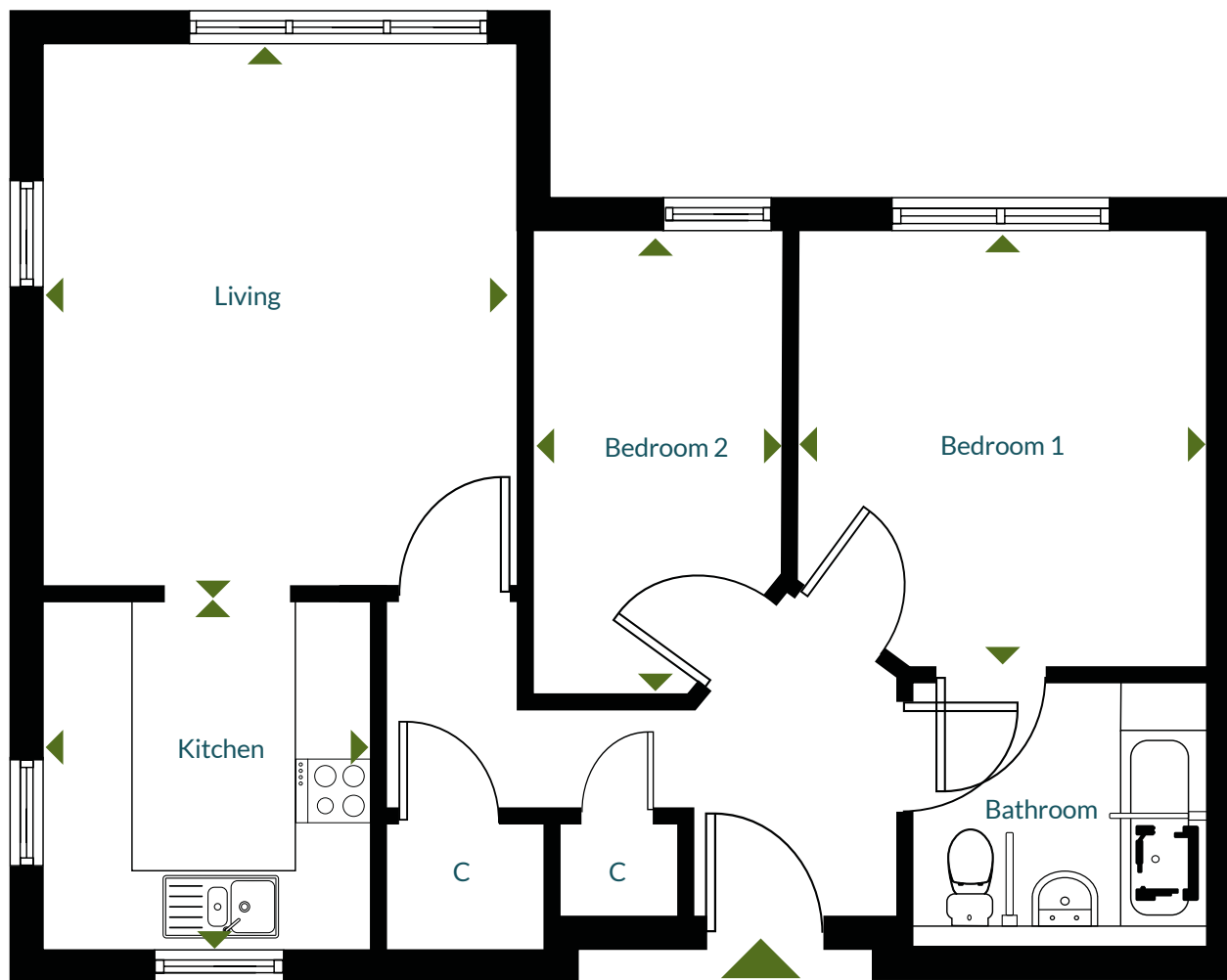


Please note, floor plans and dimensions are taken from architectural drawings and are for guidance only. All dimensions indicated are approximate and are within a tolerance of plus or minus 50mm. Computer generated images are indicative only.

Tarragon

Shared Ownership - Plots 14 & 50

2  Floor G & 1



C = Cupboard

Apartment Size: 670ft²



Please note, floor plans and dimensions are taken from architectural drawings and are for guidance only. All dimensions indicated are approximate and are within a tolerance of plus or minus 50mm. Computer generated images are indicative only.